

小型加速器による小型高輝度X 線源とイメージング基盤技術開発

2015年5月14日

リガク 栗林 勝

@東北大学産学連携材料研究開発センター

実験条件

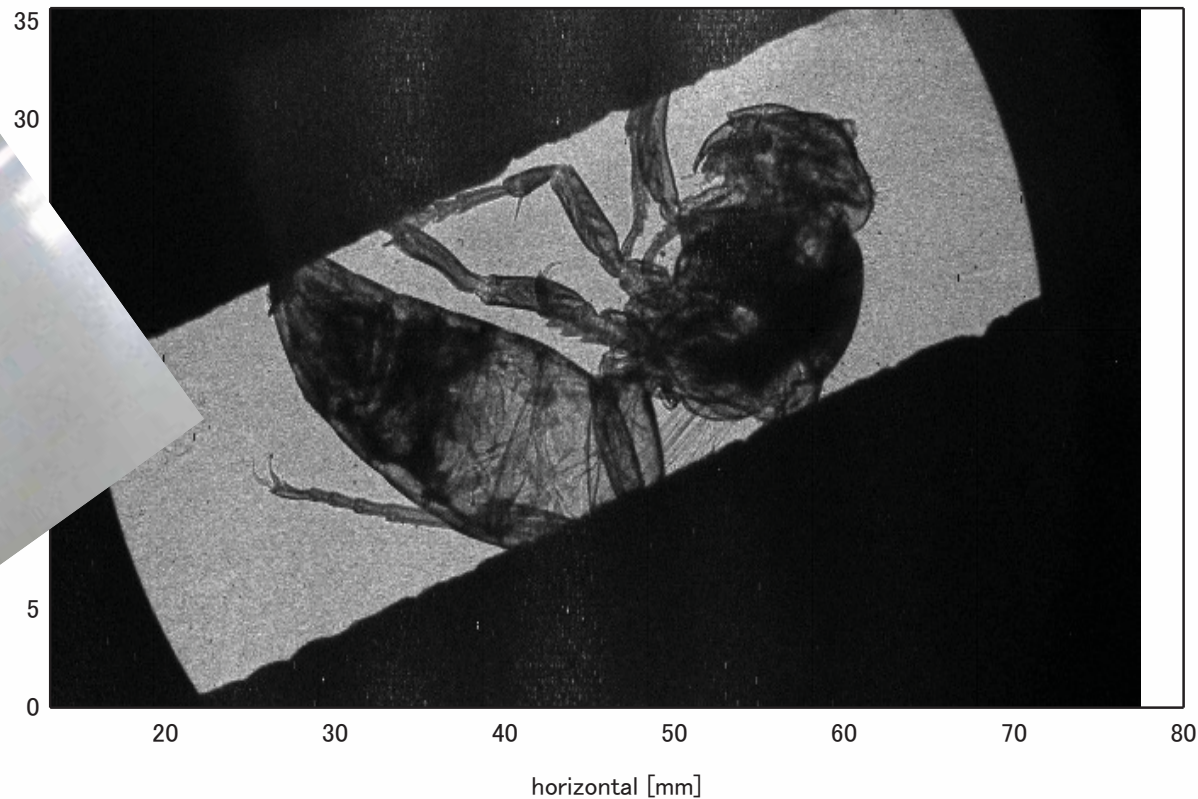
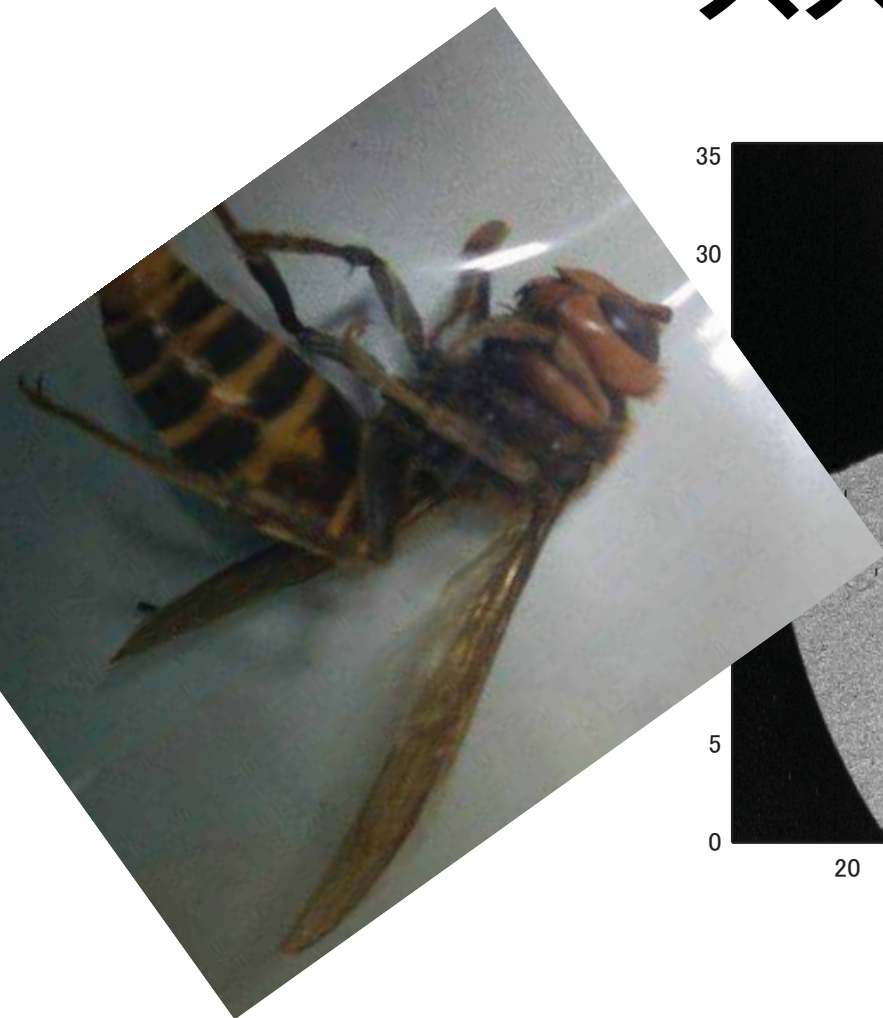
- X線エネルギー7keV
 - 電子線 20MeV、5uA(12msec)
 - フォーカスサイズ30um
 - レーザー10kW 30umΦ
- フォーカスから検出器まで16m
4.6mmΦ SDDにて6.9keV確認
- Hypix Test disc setting
 - 5.3keV-13keV(threshold 223-330
base line 150)



実験配置



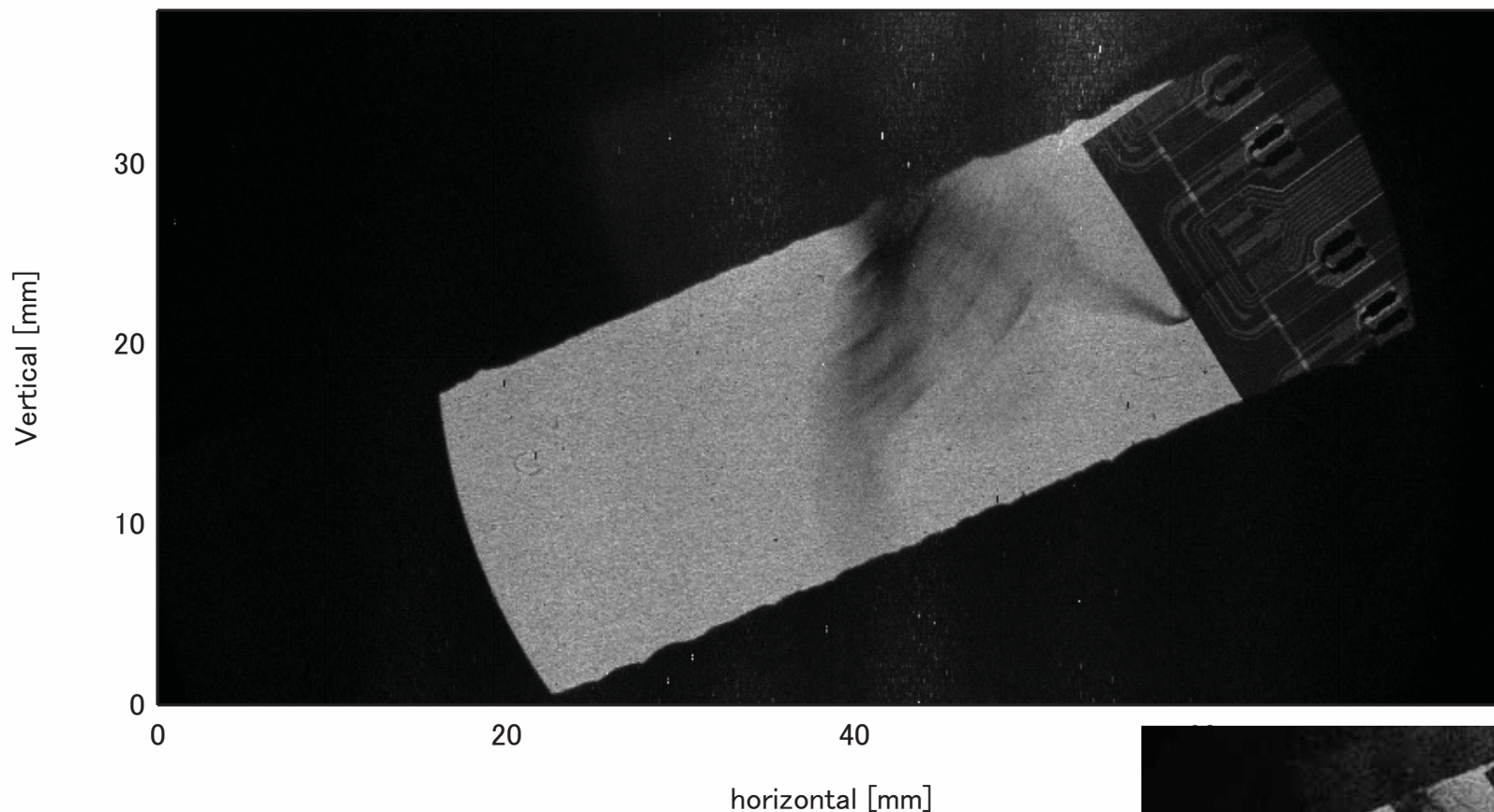
スズメバチ



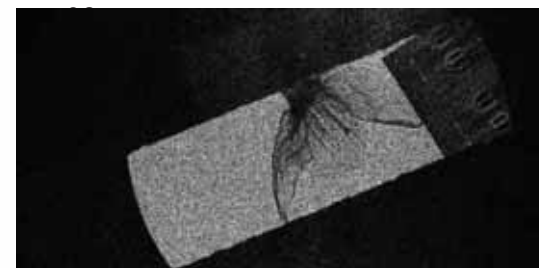
サンプル



桜の花びら 基板



10sec 60 times exporuse
Movie 7frame/sec



今後予定

- マーケティング関係
 - － X線分析分野
 - － イメージング検査装置
 - 位相コントラストイメージング
 - CT
 - マンモグラフィー
 - メディカルイメージング
 - － 半導体
 - 露光
 - マスク検査
- 実験関係
 - － 結晶分光によるエネルギー幅の測定
 - － イメージング実験

Copyright notice

Copyright © 2013 — Rigaku Corporation and its Global Subsidiaries. All Rights Reserved.

The textual, photographic, video, audio, and combined audiovisual materials and documents resulting from the promotional or educational activities of Rigaku Corporation and its Global Subsidiaries, including the material contained on the various Corporate Web sites, are protected under U.S., Japanese and international laws as copyrighted works. Anyone who displays, reproduces, copies, creates derivative works, or sells our textual, photographic, multimedia, PowerPoint, video or audiovisual programs for commercial or non-commercial purposes without our permission violates the copyright laws and is liable for copyright infringement.

Likewise, Rigaku Corporation (and its Global Subsidiaries) trademarks and service marks are protected by state, federal, and international trademark laws. Any person who uses our marks for commercial or non-commercial purposes without our permission on goods or services in such a way that it dilutes the distinctive quality of our marks or that creates the likelihood of confusion with our marks is liable for trademark infringement.

Liability for copyright or trademark infringement involves the potential for significant civil damages, including, in particular cases, statutory damages, liability for up to three times actual damages, and attorney's fees.

If you have any questions regarding this notice, please send an e-mail to info@rigaku.com.

Copyright confidentiality notice

This presentation is the property of Rigaku Corporation and its subsidiaries (the “Company”) and is strictly confidential. It contains information intended only for the person(s) to whom it is transmitted. With receipt of this information, recipient(s) acknowledges and agrees that: (1) this document is not intended to be distributed, and if distributed inadvertently, will be returned to the Company as soon as possible; (2) the recipient will not copy, fax, reproduce, divulge, or distribute this confidential information, in whole or in part, without the express written consent of the Company; (3) all of the information herein will be treated as confidential material with no less care than that afforded to its own confidential material.